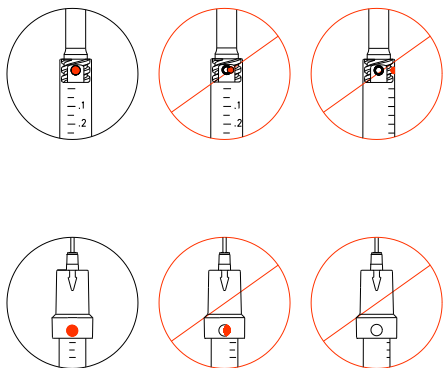
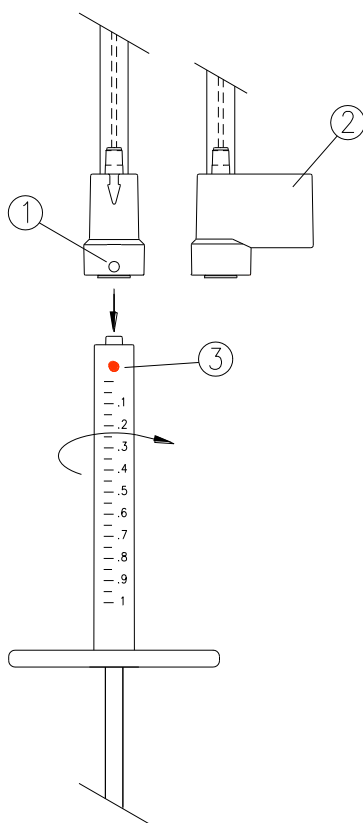


# INJECTION NEEDLE

## Syringe Assembly Instructions



**Rx ONLY**



### FEATURES

- The Merz North America needle has a viewing hole or ring (1) on the hub to indicate a correct connection when it is assembled to a Merz North America product syringe (see illustration).

- Single use only.

### ASSEMBLE TO SYRINGE

- Use proper sterile technique when assembling the syringe to the needle.
- If the syringe contents should get on the Luer lock fitting(s), wipe clean with sterile gauze.
- Grasp and hold the needle assembly by its handle (2) with one hand.
- With your other hand, place the Merz North America product syringe onto the needle Luer and turn the syringe until a colored dot (3) is in full view through the needle viewing hole or is aligned with the ring. Do not turn beyond the colored dot. **Be sure the colored dot is aligned.**
- Grasp and hold the syringe and needle assembly with one hand. With your other hand, grasp the mid-section (or handle if present) of the needle shield and pull it directly away from the needle to avoid damaging the needle point or incurring an accidental needle stick.

- Damage or bending of the needle point could cause weakening and/or separation of the needle point from the needle body.

### ADDITIONAL SYRINGES

- Needles With Attached Handle: To use additional syringes, remove the syringe by grasping and holding the needle by its handle with one hand. With your other hand, grasp and turn the syringe counter to the direction in which you assembled it and remove it from the needle. Attach the new syringe following the steps above.
- Needles With Removable Handle: Additional syringes should not be used with these needles.

### IMPORTANT SAFETY INFORMATION

- Do not attempt to straighten angled or bent needles. Discard and replace.
- Do not resterilize. Do not use if package is opened or damaged.
- Use needle once and discard in accordance with local requirements and safety standards.
- Follow National Safety Guidelines for handling of sharps (needles) to avoid accidental needle sticks with used needles which could transmit HIV (AIDS), HBV (Hepatitis) and other infectious diseases.
- For single use only. Re-use may compromise the functional properties of the device and/or lead to device failure. Re-use may also create a risk of contamination of the device and/or cause patient infection or cross-infection including but not limited to transmission of infectious disease(s) and blood transfer between patients. All which, in turn, may lead to patient injury, illness or death.

### WARRANTY

Merz North America, Inc. warrants that reasonable care has been exercised in the design and manufacture of this product.

**THIS WARRANTY IS IN LIEU OF AND EXCLUDES ALL OTHER WARRANTIES NOT EXPRESSLY SET FORTH HEREIN, WHETHER EXPRESSED OR IMPLIED BY OPERATION OF LAW OR OTHERWISE, INCLUDING BUT NOT LIMITED TO ANY IMPLIED WARRANTIES OF MERCHANTABILITY OR FITNESS FOR ITS PARTICULAR PURPOSE.**

Handling and storage of this product as well as factors relating to the patient, diagnosis, treatment, surgical procedures, and other matters beyond Merz North America, Inc.'s control directly affect the product and the results obtained from its use. Merz North America, Inc.'s obligation under this warranty is limited to the replacement of this product and Merz North America, Inc. shall not be liable for any incidental or consequential loss, damage, or expense, directly or indirectly arising from the use of this product. Merz North America, Inc. neither assumes, nor authorizes any person to assume for Merz North America, Inc., any other or additional liability or responsibility in connection with this product.



**MANUFACTURED BY:**  
Merz North America, Inc.  
4133 Courtney Road, No.10  
Franksville, WI 53126 U.S.A.  
Telephone: 262-835-3300  
Facsimile: 262-835-3330  
E-mail: info@merz.com